

φ5mm Bi-color with common cathode

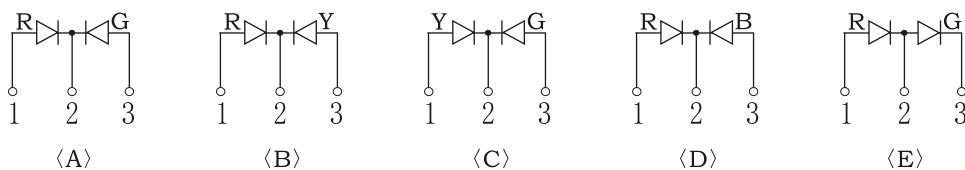
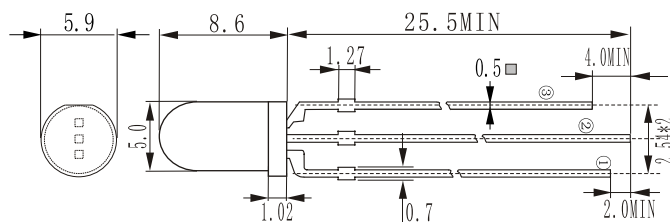
Part Number	Emitting Material	Wave Length λ_D (nm)	Emitting Color	Lens Type	V_F (v)	IV(mcd)	Viewing Angle $2\theta_{1/2}$ (°)
					Typ.	Typ.	

CL-5RG9HW	GaAsP/GaP	635	Red	White Diffused	2.0	120	35
	GaP	568	Green		2.2	85	35
CL-5RY9HW	GaAsP/GaP	635	Red	White Diffused	2.0	120	35
	GaAsP/GaP	580	Yellow		2.1	80	35
CL-5YG9SW	GaAlInP/GaAs	593	Yellow	White Diffused	2.1	350	35
	GaInN	525	Real Green		3.4	500	35
CL-5RB9SW	GaAlAs	660	Real Red	White Diffused	2.0	200	35
	GaInN	470	Blue		3.4	550	35

CL-5RG9HC	GaAsP/GaP	635	Red	Color Transparent	2.0	620	25
	GaP	568	Green		2.2	450	25
CL-5RY9HC	GaAsP/GaP	635	Red	Color Transparent	2.0	620	25
	GaAsP/GaP	580	Yellow		2.1	400	25
CL-5YG9UC	GaAlInP/GaAs	593	Yellow	Color Transparent	2.1	1600	25
	GaInN	525	Real Green		3.4	3000	25
CL-5RB9UC	GaAlAs	660	Real Red	Color Transparent	2.0	1200	25
	GaInN	470	Blue		3.4	2800	25

Package Outlines

(unit:mm)



Remark: 1. All dimensions are in millimeters, tolerance is 0.25mm unless otherwise noted.
 2. Above specification is measured by CHANGLI's test instrument and may be changed without notice.
 3. Supplier will reserve authority on material change for above specification.